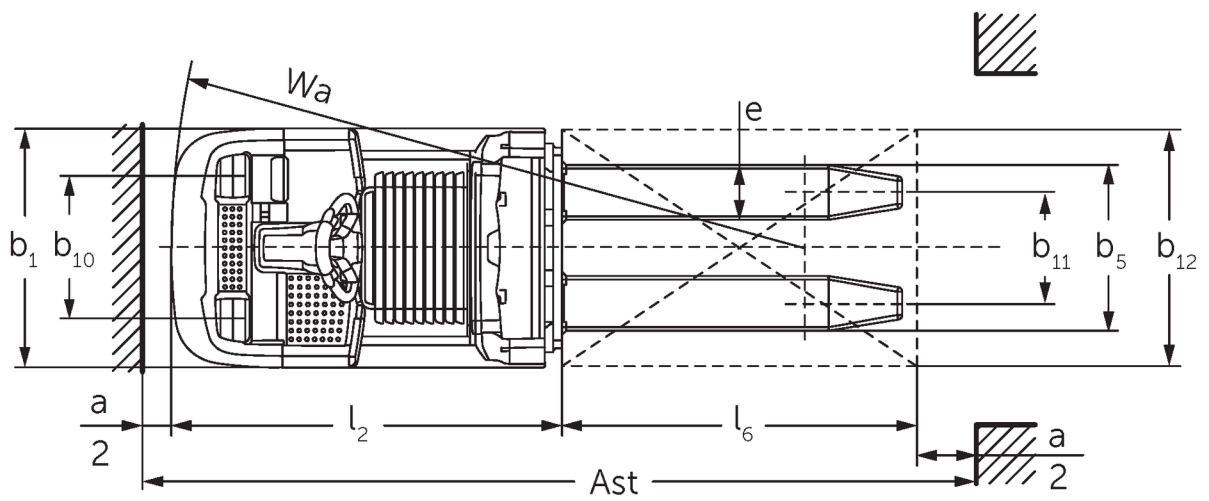
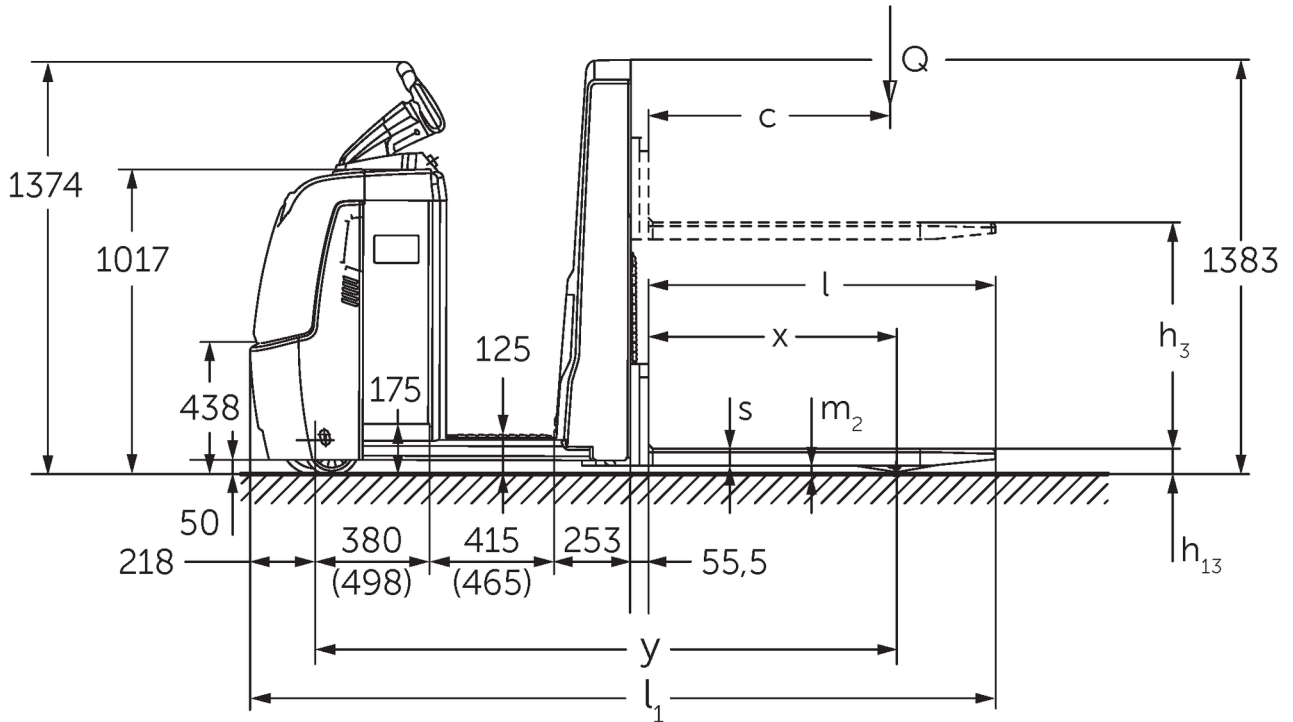




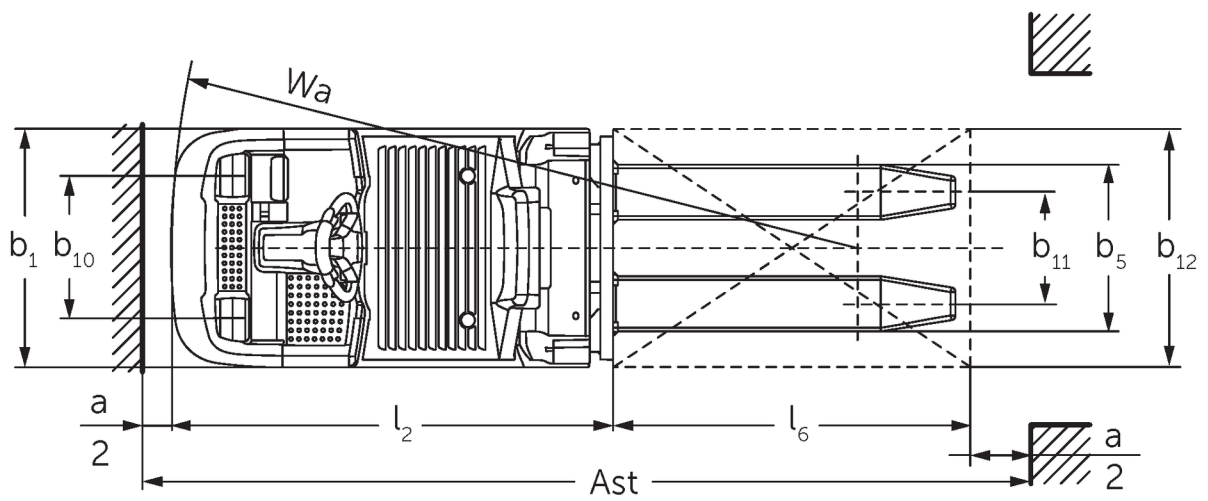
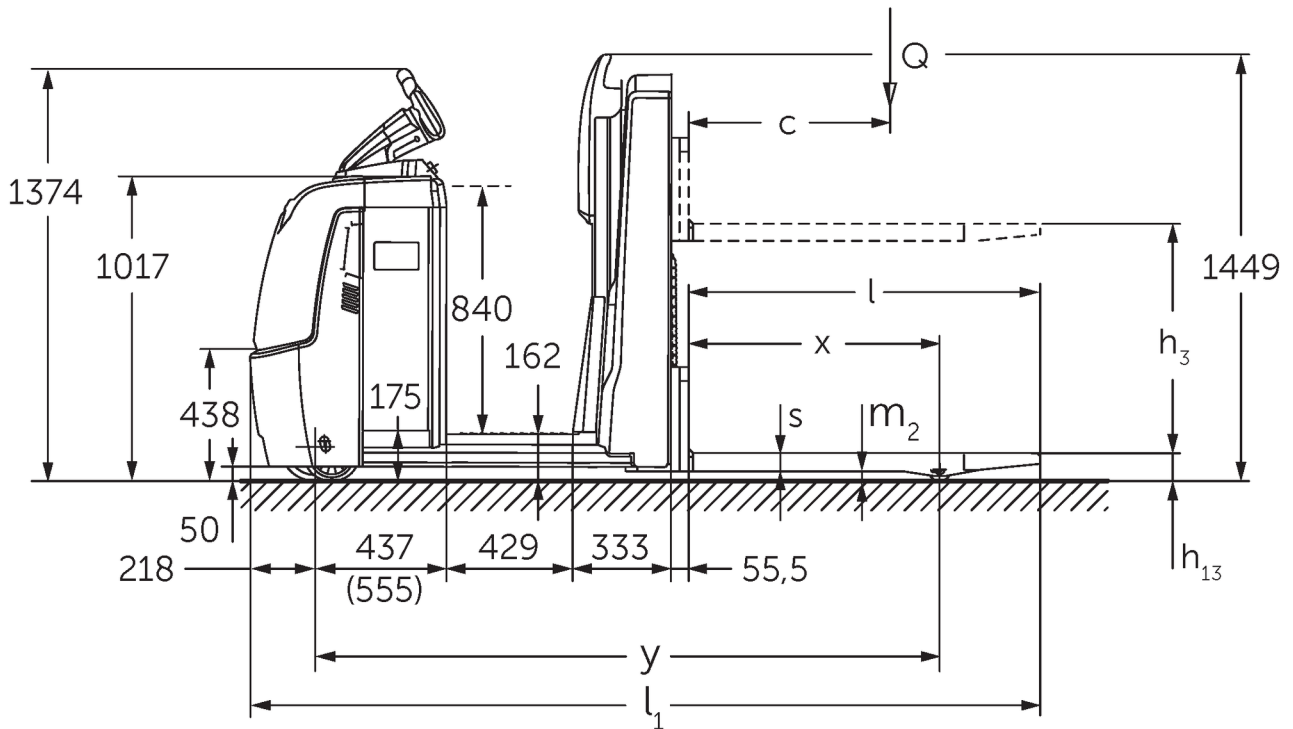
Low level order pickers **ECE 310**

Lift height: 750 mm / Capacity: 1.000-1000 kg

ECE 310



ECE 310



VDI table

Stand-on: 06/2020

Characteristic	Item No.	Description	Unit	Jungheinrich	
				ECE 310	ECE 310 HP
Characteristic	1.1	Manufacturer (abbreviated description)		Jungheinrich	
	1.2	Manufacturer's type designation		ECE 310	ECE 310 HP
	1.3	Drive		Electric	
	1.4	Operation		Order pickers	
	1.5	Capacity/load	Q kg	1.000	
	1.6	Load centre distance	c mm	600	
	1.8	Load distance, centre of drive axle to fork	x mm	821	
	1.9	Wheelbase	y mm	1.925	2.075
	Weights	2.1.1	Service weight (incl. battery)	kg	1.084
2.2		Axle load laden front/rear	kg	839 / 1.245	869 / 1.405
2.3		Axle load unladen front/rear	kg	772 / 311	862 / 411
Wheels/suspension system	3.1	Tyres		PU	
	3.2	Tyre size, front		Ø 230 x 78	
	3.3	Tyre size, rear		Ø 75 x 95	
	3.4	Additional wheels		Ø 180 x 65	
	3.5	Wheels, number front/back (x=driven)		1+1x/2	
	3.6	Tread width, front	b ₁₀ mm	481	
	3.7	Tread width, rear	b ₁₁ mm	339	
	3.7.1	2. Tread width, rear	mm	379	
Basic dimensions	4.4	Lift (h ₃)	h ₃ mm	750	
	4.9	Height of tiller handle in drive position min./max.	mm	1.374 / 1.418	
	4.15	Height, lowered	h ₁₃ mm	90	
	4.19	Overall length	l ₁ mm	2.471	2.621
	4.20	Length including fork shank	l ₂ mm	1.321	1.471
	4.21.1	2. Overall width (b2)	b ₁ mm	810	
	4.22	Fork dimensions	s/e/l mm	56 / 185 / 1.150	
	4.25	Width across forks (dimension 1), WaF	b ₅ mm	520	
	4.25.1	Width across forks (dimension 2)	b ₅ mm	560	
	4.32	Ground clearance centre of wheelbase	m ₂ mm	30	
	4.34.1	Aisle width (pallet 800x1200 length)	Ast mm	2.721	2.871
	4.35	Turning radius	W _a mm	2.142	2.292
Performance data	5.1	Travel speed laden/unladen	km/h	11.5 / 14	
	5.2	Lift speed laden/unladen	m/s	0.17 / 0.33	
	5.3	Lowering speed laden/unladen	m/s	0.19 / 0.19	
	5.8	Max. gradeability laden/unladen	%	6 / 15	
	5.10	Service brake		generative	
E-motor/Electronics	6.1	Drive motor, performance S2 60 min	kW	3.2	
	6.2	Lift motor, performance with S3	kW	1.5	
	6.4	Battery voltage / nominal capacity	V / Ah	24 / 465	
	6.5	Battery weight	kg	370	
	6.6.1	Energy consumption according to EN cycle	kWh/h	0.47	
	6.6.2	CO2 equivalent as per EN 16796	kg/h	0,25	
	6.7	Throughput	t/h	68	67
	6.8.1	Energy consumption with max. throughput	kWh/h	1.47	

Miscellaneous	8.1	Type of drive control		AC speedCONTROL
	10.5	Steering version		Electric steering
	10.7	Sound level as per EN12053, operator's ear	dB (A)	62
- In accordance with VDI Guideline 2198 this data sheet provides details of the standard truck only. Non-standard tyres, different masts, optional equipment, etc. may result in different values.				

1) With XL battery compartment: 24 V / 620 Ah / 460 kg 2) With XL battery compartment = values + 118 mm 3) With option for extended operator position = values + 50 mm 4) Diagonal as per VDI = values + 94 mm 5) Values for battery compartment L, standard stand-on platform and fork length = 1150 mm

The German production facilities in
Norderstedt, Moosburg and Landsberg
are certified.

ISO 9001
ISO 14001

Jungheinrich fork lift trucks meet
European safety requirements.



 **JUNGHEINRICH**

The Jungheinrich logo, featuring a red upward-pointing arrow integrated into the letter 'J', followed by the word 'JUNGHEINRICH' in a bold, black, sans-serif font.